

DMF-Z Right Angle Type Latching Solenoid Valve

Product Purpose

Pulse solenoid valve (also called diaphragm valve), it is the "switch". Injection control instrument by pulse output signal of the control of the filter bag one row (room) injection out dust. Make the resistance of the filter to keep in the scope of the set inside, in order to ensure that the filter processing power and dust collecting efficiency.

DMF-Z type pulse valve as right angle type valve, The Angle between import and export is 90°, Suitable for air bag dust and the installation of the wind spray connection. Airflow unobstructed, can to meet the requirements of the clear grey gas pulse.



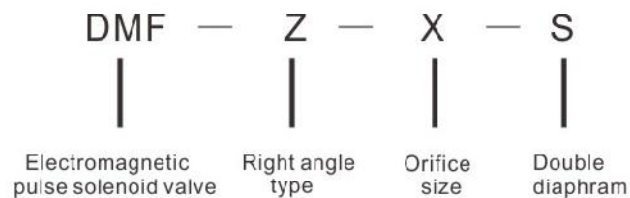
Working Principle

The pulse valve diaphragm is divided into two, gas chamber (Front & back), when switching compressed air, Compressed air through the throttle orifice into the gas chamber after at this time of the gas chamber pressure will diaphragm components.

Close to the valve outlets, pulse valve is in "closed" status. Pulse injection control instrument signal that the pulse valve bit back, after the gas Room put stomatal open, and the gas chamber pressure loss after quickly, diaphragm components moved, the compressed air. A valve lose export injection, pulse valve in the "open" status. Pulse injection control instrument signal disappears, solenoid pulse valve bit reset, gas after.

Room put stomatal closure, the gas chamber pressure after increase is clingy valve diaphragm components of outlets, solenoid pulse valve and in "closed" status.

Model Implication



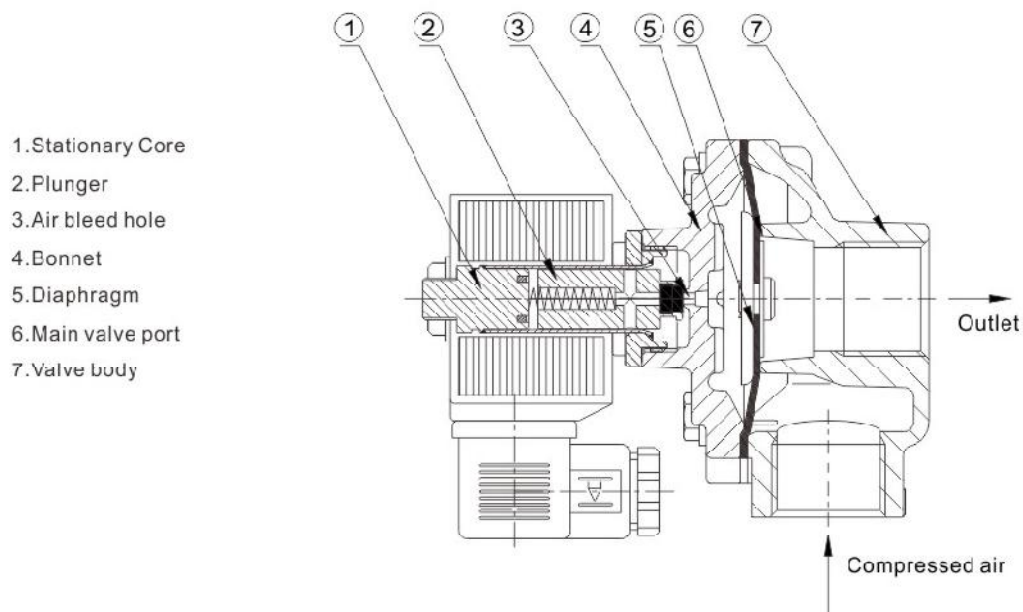
Valve Selection List

Cale	Model	Orifice size		Number Of Seal	Inlet Pipe Size	Outlet Pipe Size	Weight (KG)
		Metric	Inch				
1	DMF-Z-20	φ 20	3/4"	1	G3/4 "	G3/4 "	0.75
2	DMF-Z-25	φ 25	1"	1	G1 "	G1 "	0.7
3	DMF-Z-40S	φ 40	1 1/2"	2	G1 1/2 "	G1 1/2 "	1.3
4	DMF-Z-50S	φ 50	2"	2	G2 "	G2 "	2.65
5	DMF-Z-62S	φ 62	2 1/2"	2	G2 1/2 "	G2 1/2 "	2.3

Sanlixin Solenoid Valve

DMF-Z Right Angle Type Latching Solenoid Valve

Construction external dimensions chart



Technical parameters

Working pressure : 0.2MPa ~ 0.8MPa

Working : Clean air

Voltage : AC220V/230V/240V/110V/24V 50/60HZ 33VA DC24V/12V 30W

Nass Coil : AC220V/230V/240V 50/60HZ ; DC24V

Ambient temperature : 0°C ~ 65°C

The lifetime : 1000000 or 3 years

Material

Valve body : Aluminum alloy

Pilot Components: IJ117

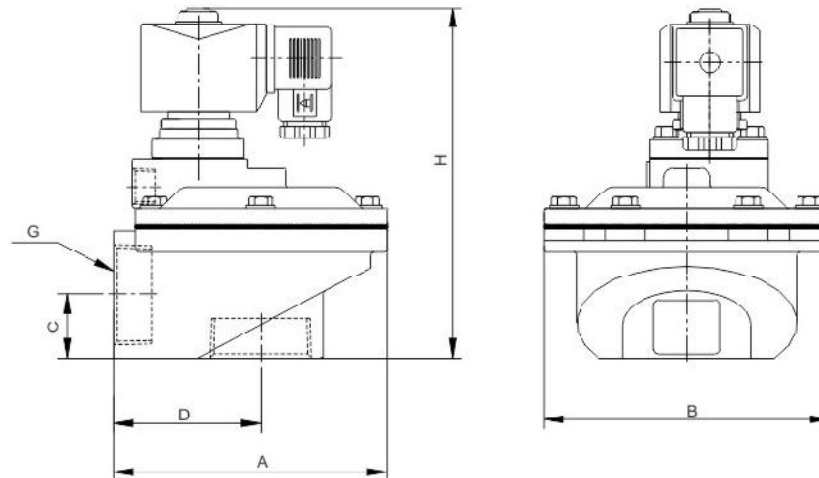
Diaphragm : NBR

Spring : SS302

Fastener : SS304

DMF-Z Right Angle Type Latching Solenoid Valve

Structure Size



Model	A	B	C	D	G	H
DMF-Z-20	110	75	22	52	G3/4	120
DMF-Z-25	110	75	22	52	G1"	120
DMF-Z-40S	131	136.5	30.5	70.5	1 1/2"	159.5
DMF-Z-50S	168	168	56	95	2"	220
DMF-Z-62S	168	168	56	95	2 1/2"	220

Installation method

Solenoid pulse valve input(IN) and air bag is connected to the metal the antput termind filter in connection with spray wind connection between thread fill in seal materialc teflon or seal pustes it's good to tighten the seal.

